

CHANGZHOU SUNNERGY ENERGY TECHNOLOGY CO., LTD

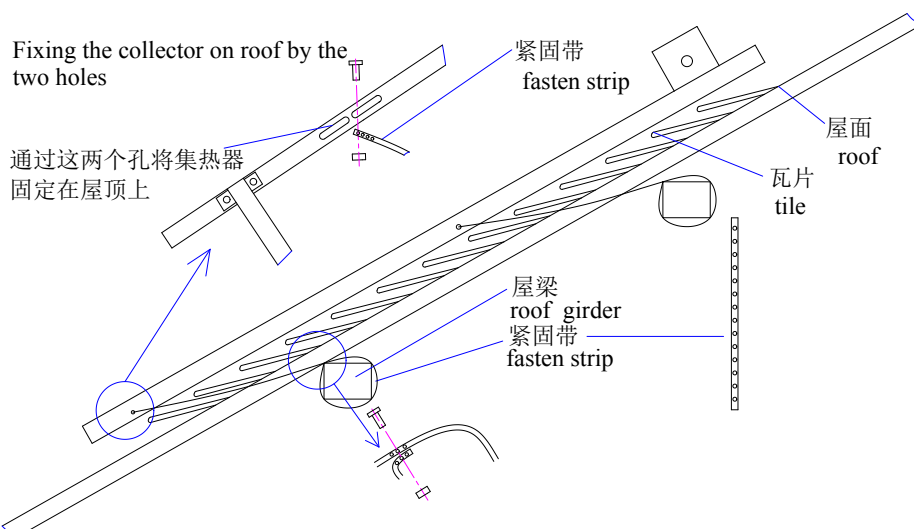
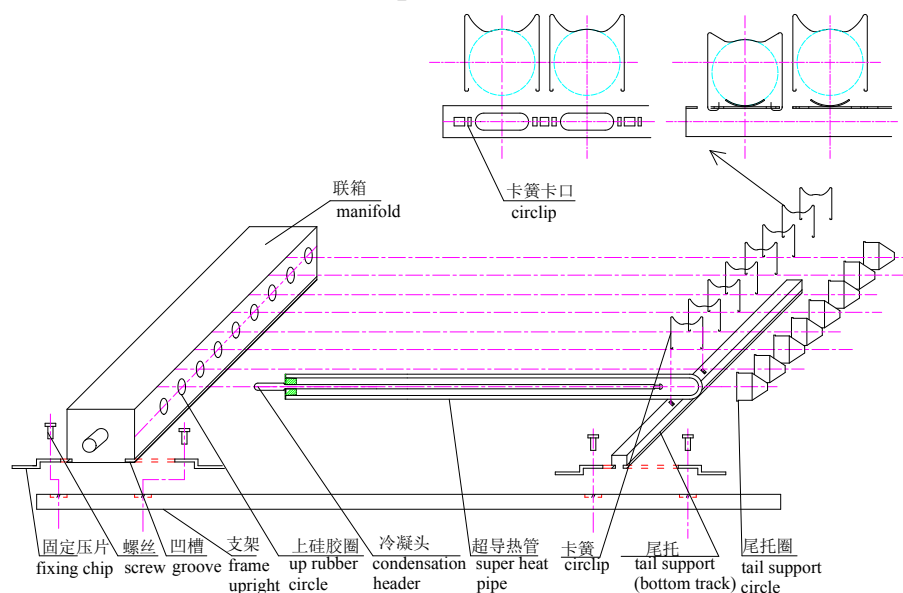


ADD: LUOXI TOWN, NEW DISTRICT, CHANGZHOU, JIANGSU, CHINA, 213000

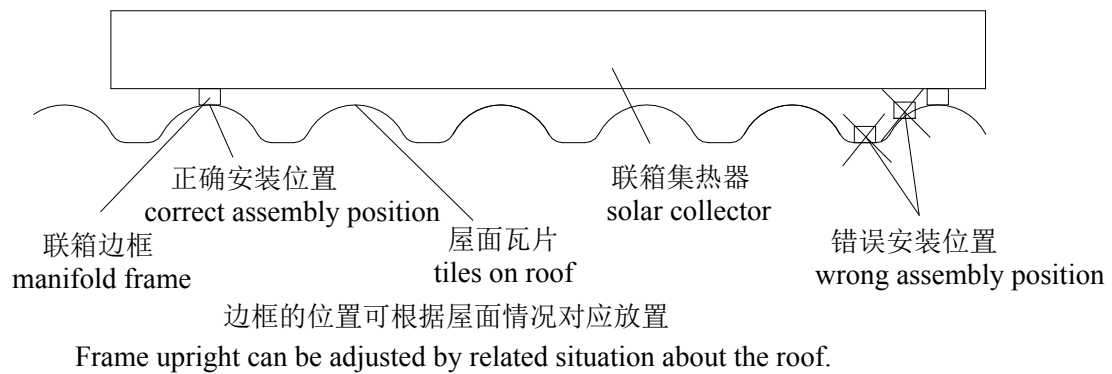
TEL: +86-519-85606259 FAX: +86-519-85606275 E-mail: sunnergysolar@sunnergy.cn Skype: fu.izzie Whatsapp: +86-13815044097

Assembly Instruction for Separated Series Heat Collector

(Instruction for all parts of collectors):

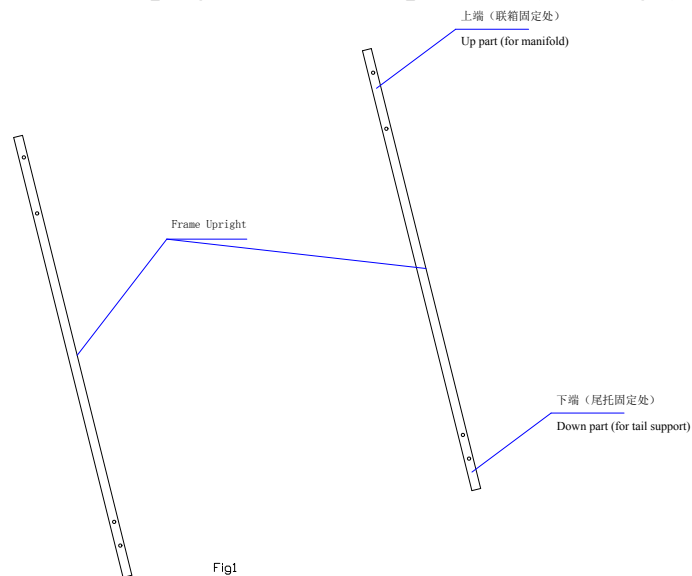


(If the roof is wave alike, corrugation must be noticed with related frame upright during assembling.):



Instruction and Steps:

Step1 Put the two frame upright on roof in parallel (See Fig1)



Step2 Put the manifold on the up part of frame upright, fix the chips with the grooves under the manifold by screws so as to connect the manifold with the two frames. (See Fig2)

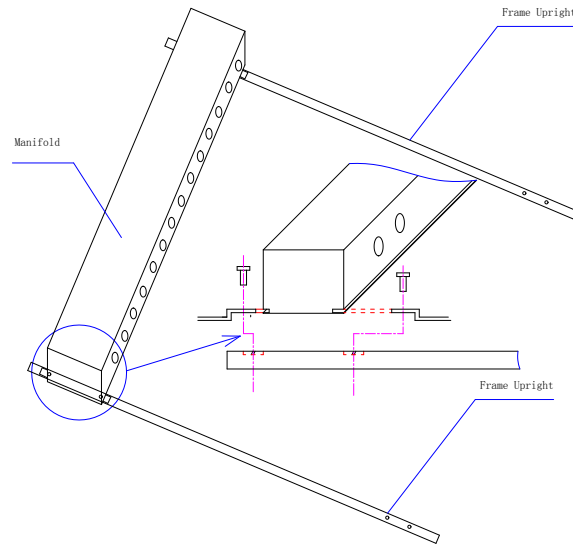
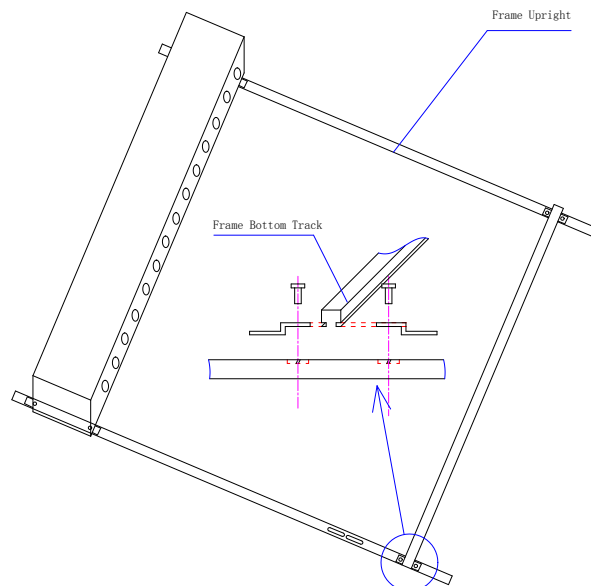
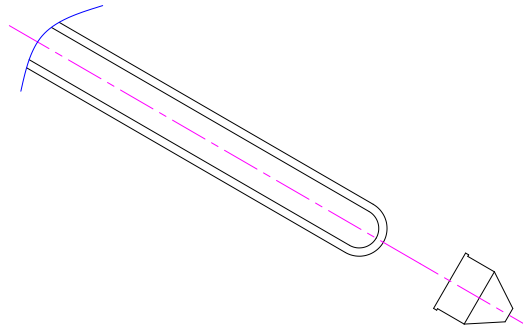


Fig2

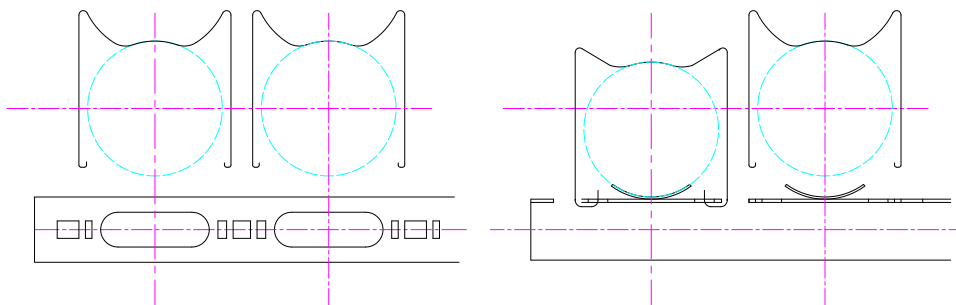
Step3 Put the bottom track on the two frames, connect them by screws.(See Fig3)



Step4 Cover rubber circles over each tube.

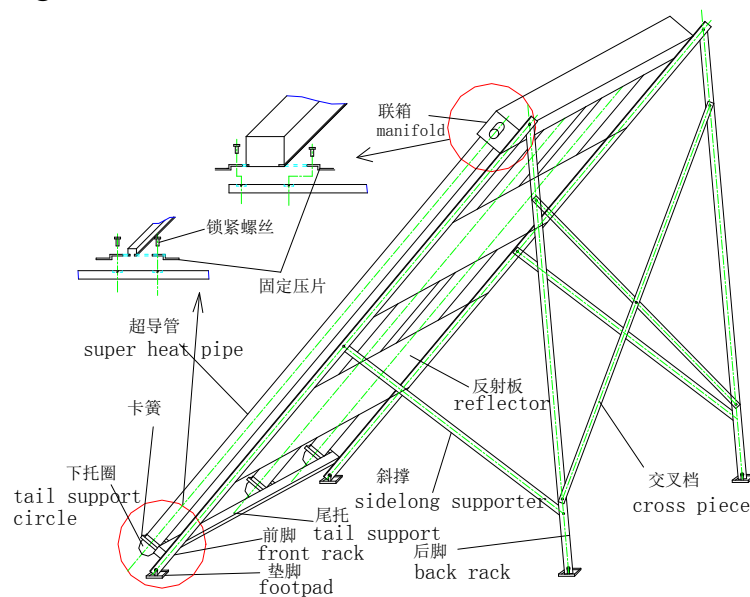


Step5 Brush silicon grease on condensation header of heat pipe, then insert the pipe into the pipeline of up silicon circle, fasten the end of heat pipe and the bottom track with circlip.



Step6 Tighten the screws and Check generally

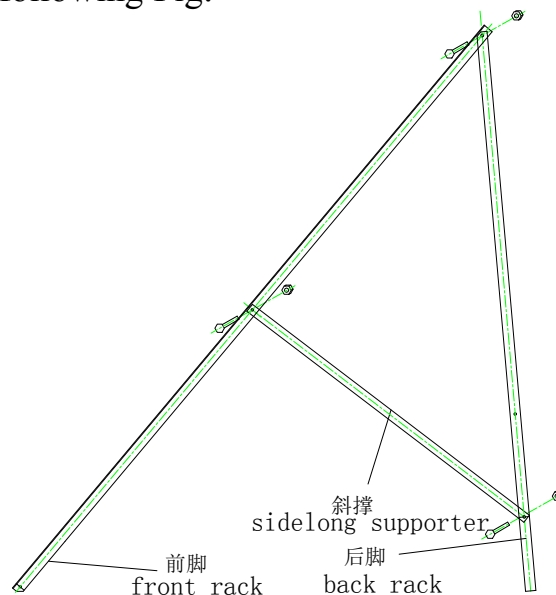
If the collector is fixed with Bracket A but not on roof directly, please view the following :



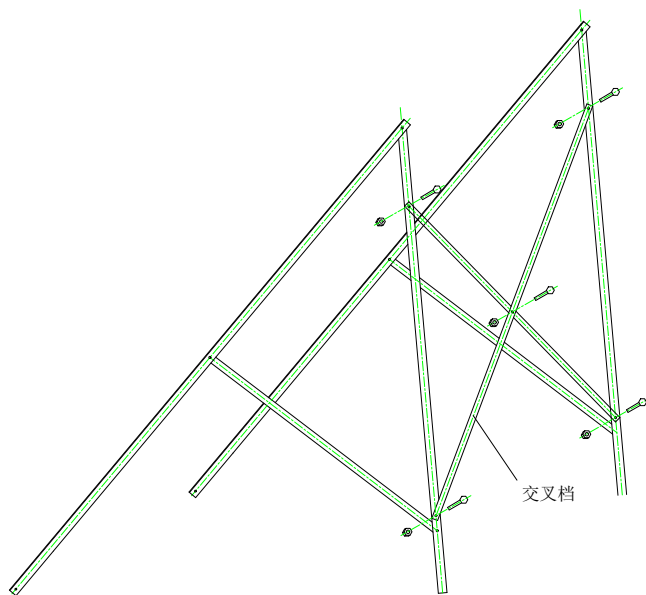
Instruction for Assembly and Steps:

Herein the Bracket A is just one of the brackets, and with the instruction of this Bracket A to show the instruction for Assembly and Steps of all brackets.

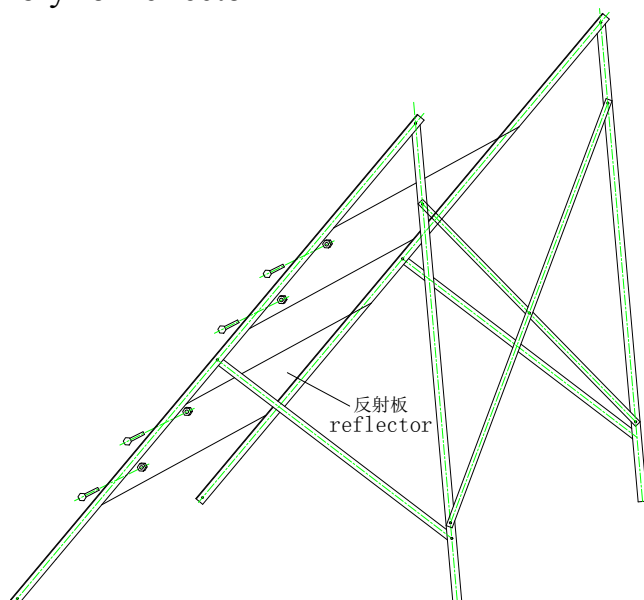
Step1 Connect front support , back support and sidelong support to form model A. See following Fig:



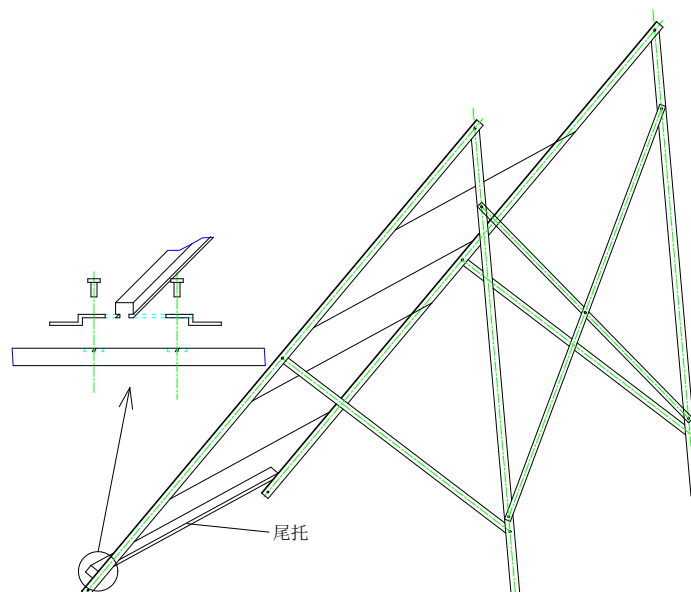
Step2 Assembly for cross beam



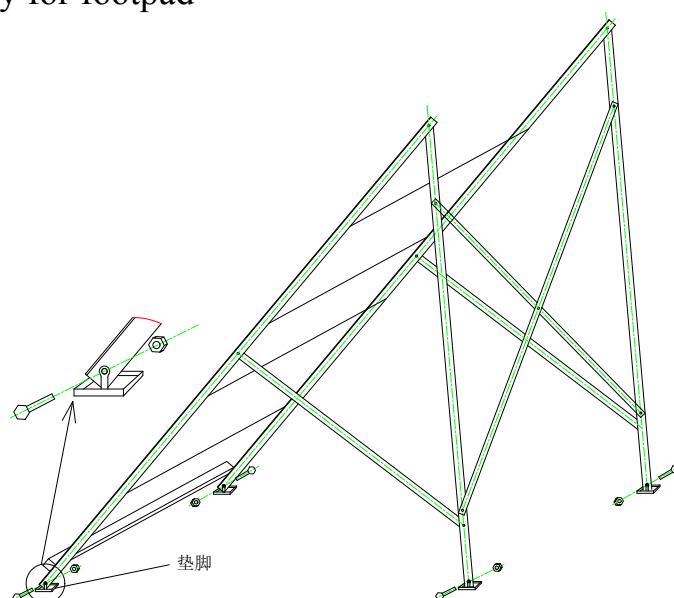
Step3 Assembly for reflector



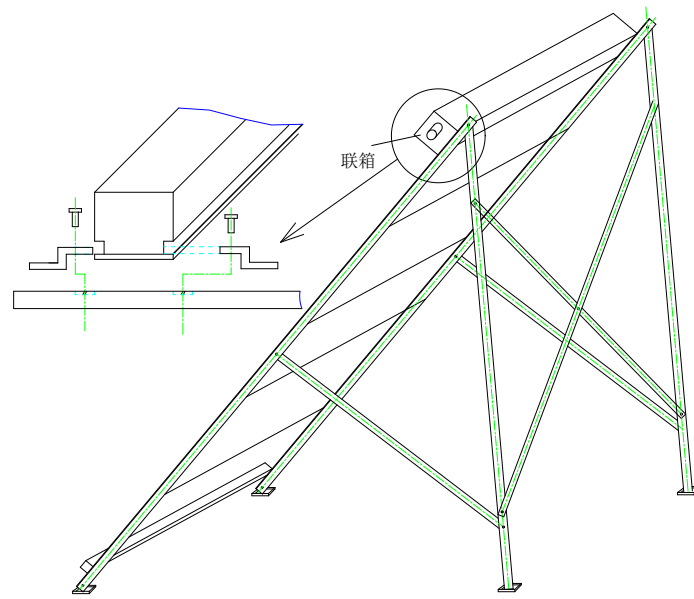
Step4 Assembly for bottom track



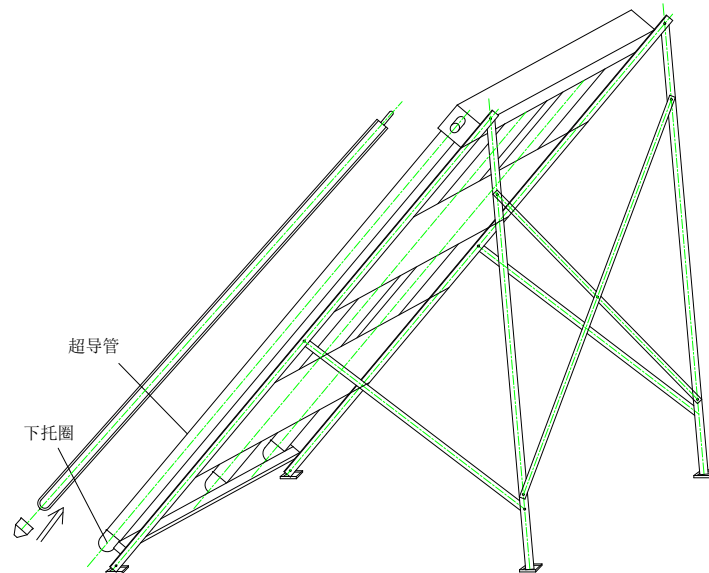
Step5 Assembly for footpad



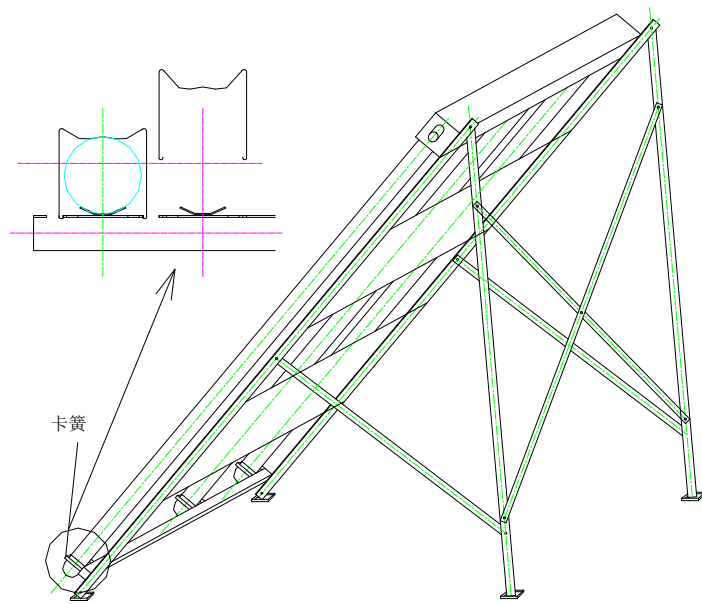
Step6 Assembly for manifold



Step7 Assembly for super heat pipes and tail support circles



Step8 Assembly for circlip



Step9 Tighten screws and check generally



Detail Pictures:



